



[www.kings-group.net](http://www.kings-group.net)

9 Lynton Parade  
Cheshunt EN8 8LF  
Tel: 01992 635735

**Fowley Mead Park, Longcroft Drive, Waltham Cross, EN8**



**Asking Price £130,000**

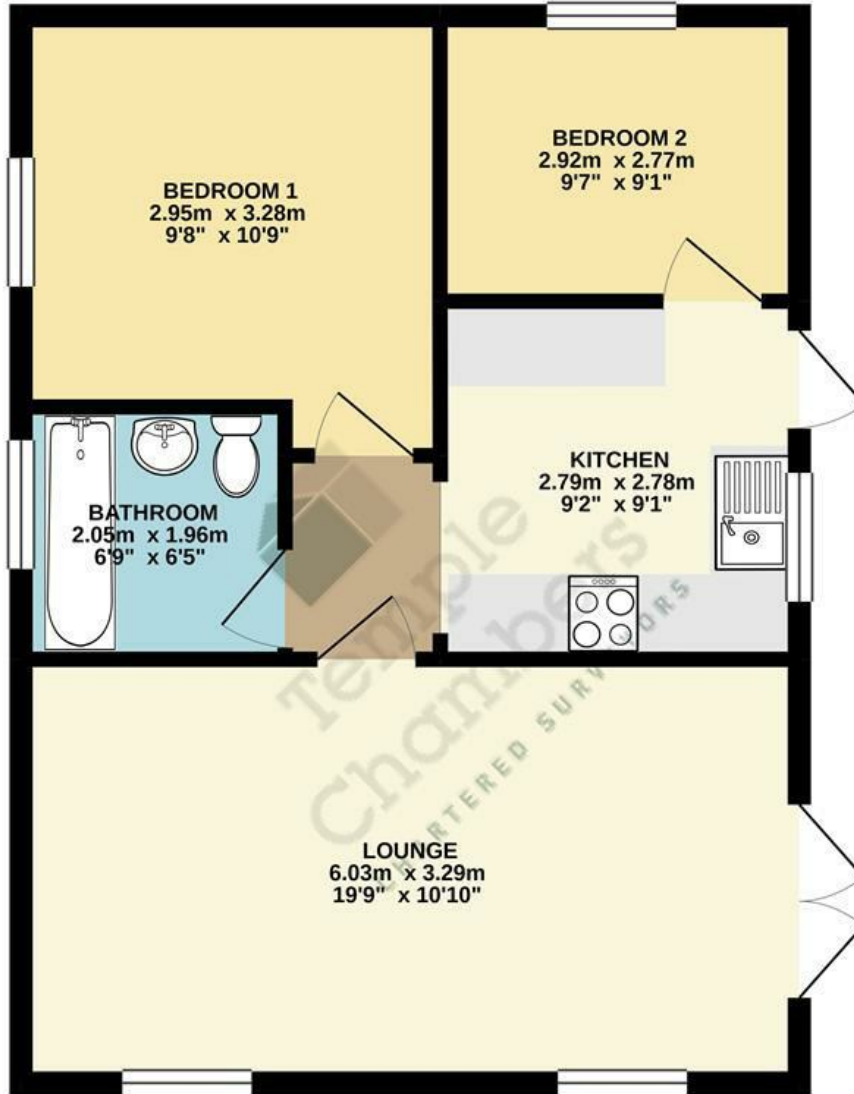
Family owned residential park within the Lea Valley, closely situated between two towns, with bus/train links nearby, with central London just 20 minutes away!

This Parkhome is located In between Waltham Cross and Waltham Abbey. It is also in close proximity to River Lea.

Fowley Mead Park development stipulates that residents must be over the age of 50 years of age and no dogs or commercial vehicles are allowed on site.



GROUND FLOOR  
50.0 sq.m. (538 sq.ft.) approx.



TOTAL FLOOR AREA : 50.0 sq.m. (538 sq.ft.) approx.

Whilst every attempt has been made to ensure the accuracy of the floorplan contained here, measurements of doors, windows, rooms and any other items are approximate and no responsibility is taken for any error, omission or mis-statement. This plan is for illustrative purposes only and should be used as such by any prospective purchaser. The services, systems and appliances shown have not been tested and no guarantee as to their operability or efficiency can be given.  
Made with Metreplex ©2020

Energy Efficiency Rating		Current	Potential
Very energy efficient - lower running costs			
(92 plus) <b>A</b>			
(81-91) <b>B</b>			
(69-80) <b>C</b>			
(55-68) <b>D</b>			
(39-54) <b>E</b>			
(21-38) <b>F</b>			
(1-20) <b>G</b>			
Not energy efficient - higher running costs			
<b>England &amp; Wales</b>	EU Directive 2002/91/EC		

Environmental Impact (CO <sub>2</sub> ) Rating		Current	Potential
Very environmentally friendly - lower CO <sub>2</sub> emissions			
(92 plus) <b>A</b>			
(81-91) <b>B</b>			
(69-80) <b>C</b>			
(55-68) <b>D</b>			
(39-54) <b>E</b>			
(21-38) <b>F</b>			
(1-20) <b>G</b>			
Not environmentally friendly - higher CO <sub>2</sub> emissions			
<b>England &amp; Wales</b>	EU Directive 2002/91/EC		

